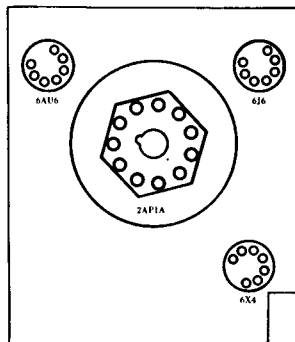


# REPLACEMENT PARTS

Symbol	Description	Part Number
C1, C3, C4, C5	Capacitor, .1 mf, 600 volts, paper tubular	CPA003-104
C2, C6	Capacitor, .25 mf, 400 volts, paper tubular	CPA002-254
C7, C14	Capacitor, .05 mf, 400 volts, paper tubular	CPA002-503
C8	Capacitor, .01 mf, 400 volts, paper tubular	CPA002-103
C9	Capacitor, .002 mf, 400 volts, paper tubular	CPA002-202
C10	Capacitor, 390 mmf 10%, 500 volts, mica	CMA701-391
C11	Capacitor, 82 mmf 10%, 500 volts, mica	CMA701-820
C12, C13	Capacitor, 8 mf, 450 volts, electrolytic tubular	CDB003- 2
J1, J3	Jack, red	EJTO01- 2
J2, J4	Jack, black	EJTO01- 1
L1	Coil, peaking, .0195 henries	LRU001- 1
R1, R4	Potentiometer, .5 Meg. Audio Taper SPDT Switch	RVB001- 4
R2	Potentiometer, .05 Meg. Linear Taper	RVB001- 5
R3	Potentiometer, 1 meg. dual, linear taper	RVB002- 1
R5	Potentiometer, .5 meg. linear taper SPST switch	RVB001- 6
R6, R16	Resistor, 680 ohms 10%, 1/4 W, carbon	RCY010-681
R7	Resistor, 47,000 ohms 10%, 1/2 W, carbon	RCC010-473
R8, R10	Resistor, 220,000 ohms 10%, 1/2 W, carbon	RCC010-224
R9, R12	Resistor, 3.3 Meg. 10%, 1/4 W, carbon	RCY010-335
R11	Resistor, 47,000 ohms 10%, 1/2 W, carbon	RCY010-473
R13	Resistor, 150,000 ohms 10%, 1/4 W, carbon	RCY010-154
R14	Resistor, 39,000 ohms 10%, 1/4 W, carbon	RCY010-393
R15	Resistor, 100,000 ohms 10%, 1/2 W, carbon	RCC010-104
R17	Resistor, 4700 ohms 10%, 1 W, carbon	RCD010-472
R18	Resistor, 1.5 meg. 10%, 1/4 W, carbon	RCY010-155
R19	Resistor, 470,000 ohms 10%, 1/4 W, carbon	RCY010-474
R20	Resistor, 560 ohms 10%, 1/4 W, carbon	RCY010-561
R21	Resistor, 270 ohms 10%, 1/4 W, carbon	RCY010-271
S1	Switch, 2 wafer, 4P5T Rotary	SWR001- 1
S2	Switch, single wafer, 3P4T rotary	SWR003- 1
T1	Transformer, Power	LPU001- 1
V1	Tube, type 6AU6	
V2	Tube, type 2AP1A	
V3	Tube, type 6J6	
V4	Tube, type 6X4	
X1, X3, X4	Tube socket, Miniature, 7 pin	ESR101- 1
X2	Tube socket, magnal, 11 pin	ESR201- 1
	Power Cord, AC	WPR001- 2
	Knob, bar pointer	NKB003- 1
	Knob	NKB001- 1
	Light Shield	MTB001- 1
	Cathode Ray tube felt mounting	GFA001- 1



## TYPICAL VOLTAGES

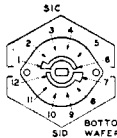
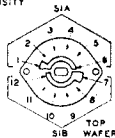
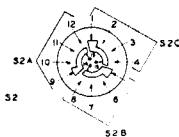
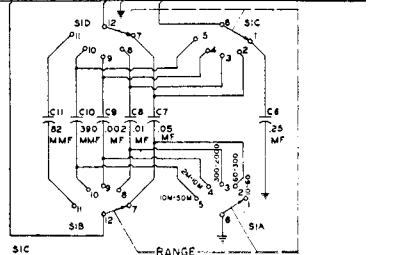
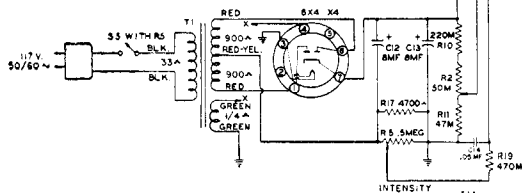
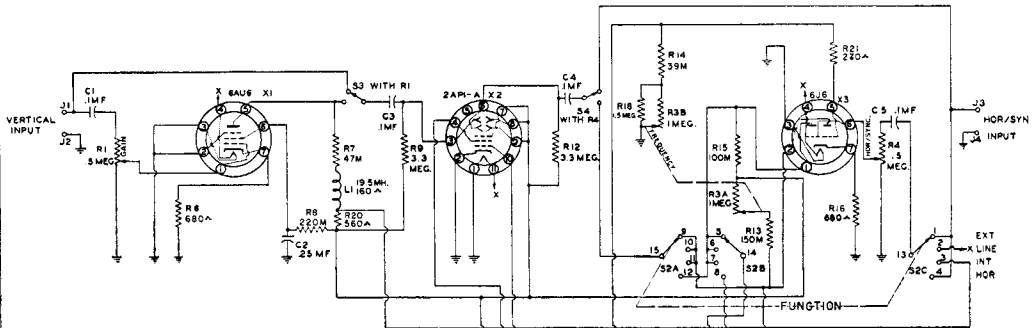
6AU6	6J6
Pin	Pin
1 Grid	1 Plate No. 1 110 DC
2 Suppressor	2 Plate No. 2 90 DC
3 Heater	3 Heater
4 Heater	4 Heater 6.3 AC
5 Plate	5 Grid No. 2
6 Screen	6 Grid No. 1
7 Cathode	7 Cathode 2.2 DC
	<b>2AP1A</b>
	Pin
	1 Heater
	2 Cathode
<b>6X4</b>	3 Vert. Plate 225 DC
Pin	4 Screen 70 DC
1 Plate	<b>5</b>
2	6 Hor. Plate 225 DC
3 Heater	7 Plate 360 DC
4 Heater	8 Vert. Plate 360 DC
5	9 Hor. Plate 360 DC
6 Plate	10 Grid
7 Cathode	11 Heater 6.3 AC

**MANUFACTURED IN U.S.A. BY  
WATERMAN PRODUCTS CO.  
PHILADELPHIA 25, PA., U.S.A.**

LICENSED UNDER RCA PATENTS

**MODEL S-10-A POCKETSCOPE  
105-125 V 50-60 AC, 23 Watts**

Serial No. ....**3410**....



ALL CONTROLS ARE IN EXTREME COUNTER-CLOCKWISE POSITION AS VIEWED FROM FRONT OF PANEL

Waterman Products Co., Inc.  
Philadelphia 25, Pa., USA